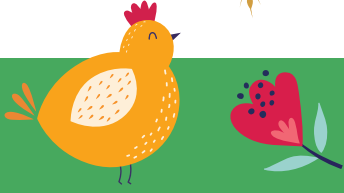


# EDENBRIDGE & OXTED

## AGRICULTURAL SHOW

*Celebrating the country way of life since 1837*



## Update for Supporters, March 2024

**As the seemingly constant rain causes all of us to despair at the waterlogged fields, the potholes in the roads and the non-stop mud, it feels like spring can't come soon enough! We're certainly sick of watching the water against the Show Office windows and we're dreaming of the warmth of July and August at the showground at Ardenrun once more.**

We're getting excited about this year's plans already, watching the trade stand bookings flying in. Thank you to all our lovely traders who are clearly really keen to come back! The rosettes are ordered, the tents are booked, the equestrian timetable is out and we'll shortly be announcing the news that our Main Ring attraction this year will be the incredible, adrenaline-fuelled Bolddog Lings freestyle motocross stunt show! You'll find yourself holding your breath as you watch these fearless riders flying upside down, performing tricks that take years of training to perfect.

So what else is new for 2024? Well, whether or not you're a fan of our equestrian section you won't fail to fall in love with the British Miniature Horses that will be competing with us this year. We've been awarded a new Horse of the Year Show qualifier for these pocket-sized perfections and can't wait to see them in action. If sheep are more your thing then there are new breed sections for Kerry Hills, Coloured Ryelands and Zwartbles in response to entry numbers last year. Our very grateful thanks to the new sponsors of these sections whose support makes them possible. Visitors can also enjoy a new beekeeping display and we're keeping everything crossed that the avian flu regulations remain as they are at present which will permit us to hold a poultry and egg show in 2024 too.



Our catering concessions have now been awarded and we're pleased once again to see our bar spots go to local businesses serving what we know our visitors want to enjoy. You'll find more diverse food vendors around the showground with everything from Mauritian street food to a locally-produced sausage; there are more dessert-style traders and more locally-produced ice cream from our farming friends. Bookings for our Food Hall have already surpassed those of 2023 so make sure you plan time for a good wander through there to see all the delicious artisan food and drinks on offer.

Whether you're spending long days and nights in the lambing shed, admiring the bulbs blooming in the garden or looking longingly at the Easter eggs in the shops, we hope you get time to enjoy all the things spring has to offer. Make sure when you plan your calendar that you've got our key dates noted!

Membership renewal due: 1st April (see p3)  
Annual General Meeting: 13th May  
Competition entries open: 24th May  
Competition entries close: 12th July  
Show days: 25th & 26th August



# New stewards needed!



Without a large army of volunteers our show simply couldn't operate. Each section of our show is run by an unpaid committee and relies on volunteers to bring it to life before, during and after the event.

We had a look at how many volunteer hours go into the planning and delivery of the show. It's more than 7,000 hours! We estimate the value of that time for our charity to be some £130,000 each year.

Our volunteers work in small teams across all areas of the show. We're always looking for new people to join us. Experience isn't always required but enthusiasm, a passion for the event and a 'can-do' attitude are all much appreciated.

We have volunteers in...

- Equestrian competitions – stewards for showjumping and legging up in particular are sought this year!
- Safe operation of horse walks
- Livestock competitions
- Horticulture
- Country Sports
- Member facilities and sponsor hospitality
- Public greeting, marshalling and safety
- Trade stands
- Car parking
- Paygates

If you think you'd like to give back to the show and give some time in an area of your expertise or interest then please do get in touch.

We provide training and invite all stewards to a briefing event at the showground just ahead of the show to help you feel confident about performing in your volunteering role. Depending on the time you can commit we can potentially offer benefits such as lunch and show access for a guest.

Email [info@edenbridge-show.co.uk](mailto:info@edenbridge-show.co.uk) or call us on 01342 832307 to find out more.



## Equestrian timetable now live

Are you a seasoned competitor or perhaps keen to dip a toe in the water of horse showing or showjumping?

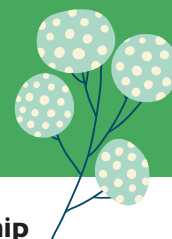
We have something for everyone in our equestrian competitions this year, from lead rein and first ridden classes for local children through to prestigious competitions for hunters and cobs, driving classes, donkeys and veterans. There's the very smallest with British Miniature Horses through to the enormous, majestic Shires. All beautifully polished and ready to perform.

This year we've a record 21 Horse of the Year Show qualifiers, 4 Royal International qualifiers and one direct London International Horse Show qualifier, so serious competitors will not be disappointed.

See the timetable and plan your showing weekend on our website.



# Membership Renewals 2024



**Each year our trustees review our membership rates to ensure they continue to offer great value for money and that they're maintained in line with any increase to our public gate prices.**

Mindful of affordability, in 2023 trustees kept rates at the 2022 level but to hold that price for a third year unfortunately isn't possible with the inflationary pressures and rising costs. A small increase has therefore been applied to membership rates for 2024.

All with a Member or Guest badge enjoy access to the Members' Marquee with prime view of the Main Ring. The marquee is home to a dedicated bar and restaurant which serves delicious hot and cold food, teas, coffees and a range of snacks throughout the day. Members also receive discounts on competition entry fees where possible, receive an invitation to our AGM in May and are sent newsletters through the year.

## **MEMBER: £48**

*A Member receives  
1 x Member badge, valid  
both days of the show.*

## **JOINT MEMBERS: £90**

*Joint Members receive  
2 x Member badges, each valid  
both days of the show.*

## **GOVERNOR: £235**

**(discounted to £185 if bought before  
31st May 2024)**

*Governors receive 1 x Governor's badge (valid both days), 6 x 'any one day' Guest badges and 1 x car pass to park in the area directly behind the Members' Marquee.*

The 2024 gate price for an adult ticket will be £24.

**CHILDREN:** Under 5s attend the show without charge. 5-16 year olds will need a Junior badge which can be purchased separately by members nearer to the show. The Junior badge price will be held at the 2023 rate of £8 per day.

**GUESTS:** Guest badges can also be purchased by our Members nearer to the show. These will be £22.50 each.



# Giving something back

**Despite all the positive sides of farming at this time of year such as welcoming new lambs and calves, challenges such as weather can still feel very overwhelming for those living and working in rural places.**

February 2024 was the wettest since 1836 in the UK, with many autumn and winter plantings having now rotted in the ground and livestock needing to stay housed for longer. Seasonal stress along with the social isolation that often comes with work in rural industries can combine to cause mental health concerns.

Acknowledging, understanding and seeking help are crucial – this guide from farming charity Yellow Wellies helps explain and signpost how you can help yourself or someone you're concerned about.

[https://www.yellowwellies.org/LittleBookOfMindingYourHead\\_5thEdition\\_1122/?page=1](https://www.yellowwellies.org/LittleBookOfMindingYourHead_5thEdition_1122/?page=1)

We are proud as an agricultural society to be able to support charities working in this sector with grant funding to help with their work. Farming Community Network and Addington Fund are two recipients of grants from our charity following last year's show.

This year's grant awards are as follows:

- Young Epilepsy, Lingfield £1000  
(stipulated for use on horticultural or agricultural projects with students)
- Addington Fund £1000  
(UK farming charity supporting young people and retired farmworkers)
- Perennial Gardeners Society £1000
- Farming Community Network £1000
- Farms for City Children £500
- Cobtree Young Farmers £500
- Dandelion Time £500
- Riding for the Disabled Association £500  
(Little Brook Equestrian)

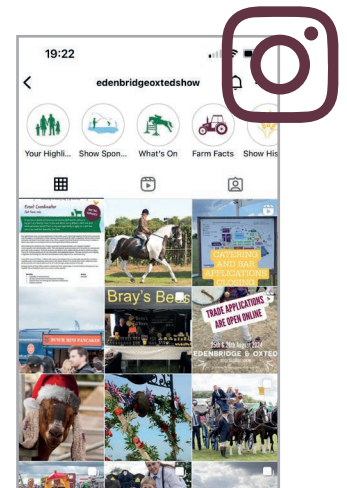


We can't resist sharing these gorgeous dairy goat kids with you!

Our goat tent will be full of kids, goatlings and milkers who will no doubt be getting up to mischief when they can...

Keep up with our news and join the conversation on our social media feeds.

Search @EdenbridgeoxtedShow



# Perfect plantings



**It's not just the keenest of beans who enter the horticulture classes at our show – they're open to everyone and it's really easy to take part.**

If you're a proud parent of a houseplant that people should get to admire, if your dahlias look perfectly perky every August or if you think you can find five beautifully uniform runner beans in your veggie patch then competing in our classes is a really fun way to be a part of the competition side of our show.

Entries are just £2 per class (reduced to £1.50 if you're a show member!) and you just need to pop your entry along to the stewards in the Horticulture Marquee on Saturday 24th August. You can collect your entry to take it home again on the Monday afternoon or you can donate it to be sold to the public at the end of the show.

All the information you need is on our website in the 'Competing' section where you'll find the competition schedule for our horticulture classes. There are also craft, flower arranging and cookery classes and a range of fun children's classes which are free to enter. The theme for this year's floral art is 'Alice in Wonderland'.



## Leave a legacy

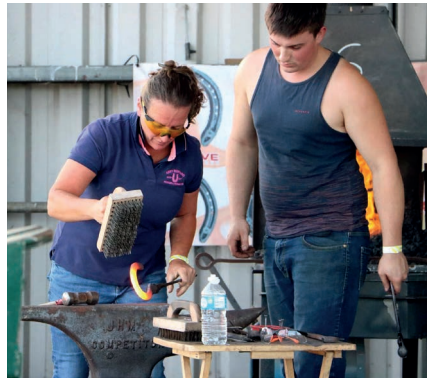
**We often hear stories in our office of members, sponsors and volunteers who have supported the show across an entire lifetime. We know how much the event means to so many, and one way that our supporters can help us long into the future is to consider leaving a gift to our show in their will.**

We are a registered charity and rely increasingly on individual donations and sponsorship to help offset the increasing running costs of our show. We invest carefully in ways that help reduce those costs and charitable giving through your lifetime or in your will is one way to help make a really meaningful difference to help secure the future of a much-loved event.

It's very simple to add a charitable gift into your will at its next review. Our Treasurer is always happy to talk about the charity's financial position, its priorities and ways in which your legacy could benefit us for generations to come.



# Spotlight on Country Sports



**One part of our showground that's been through something of a renaissance and is most definitely not to be missed is the Country Sports zone.**

It's here you'll find a very sizeable flock of farriers (what's the collective noun?!) competing in a range of classes that demonstrate their skills against the clock. There are classes for shoemaking, for the best dressed foot and for the best apprentice. Farriers come to compete from considerable distances and the standard is second to none. It's well worth factoring in some time during your visit to enjoy the display of skill and commentary.

Whilst here then don't miss the entertainment and information offered by the Country Sports Display Ring where the ins and outs of working dogs, hounds, ferrets, gamekeeping and gun dogs are all featured in light-hearted but educational, interactive sessions.

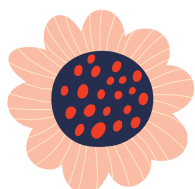
The Surrey & Sussex Coppice Group join us each year to showcase the art of coppicing and all the rural crafts and byproducts that can be created from well-managed woodland. We usually feature around ten of their members who demonstrate everything from charcoal-making to woodturning and bodging.

If watching well-trained retrievers, spaniels, spinones and pointers as they leap over fences, dive into the pond and seek out the dummies sent for them to retrieve sounds appealing then you won't want to miss the South Eastern Gundog Society and their beautifully-presented area, kindly sponsored by Priory Vets. SEGS hold an individual and team invitational competition at our show along with plenty of commentary, demonstrations and teaching tips. There's a junior 'have a go' opportunity and the popular Edenbridge Express competition which is open to all.

If the slightly more laid back pace of waterside life is more to your liking then there's plenty to keep you interested at our fly fishing pond. There are pond-dipping activities for children to help learn about underwater ecology along with fly tying demonstrations and casting lessons from the super-experienced volunteers from Salmon & Trout Surrey. They worked non-stop at the show in 2023 and provided over 70 individual fly fishing lessons through the event. They noted many people interested to hear more about how to catch carp using fly fishing techniques and are always happy to answer questions.

The terrier racing competition on Monday afternoon is nothing short of legendary, with all terriers welcome to enter - there's a short-legged and long-legged championship and even silverware to be won!

There's much more to see here, but we'd need a whole newsletter just for Country Sports! Do make sure you visit this section of our show as its volunteer team works so very hard to ensure it's impeccably presented and full of entertainment, education and interest.



THE OLD DAIRY, WINTERSELL FARM, DWELLY LANE, EDENBRIDGE, KENT TN8 6QD  
T: 01342 832307 E: [info@edenbridge-show.co.uk](mailto:info@edenbridge-show.co.uk) W: [www.edenbridge-show.co.uk](http://www.edenbridge-show.co.uk)