

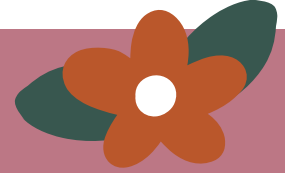
EDENBRIDGE & OXTED

AGRICULTURAL SHOW

Celebrating the country way of life since 1837



Update for Supporters, July 2023



We're counting down the days to this year's show (45 to be precise!) and the excitement is certainly building about all the competitions and attractions. With a lot of help from our volunteers, sponsors, contractors and trustees we're pulling together all the strands to help deliver an event of which we can all be proud.

The team has begun work to take the land from sheep farm to showground; there's so much work behind the scenes to fix fencing and gates, to get strimming and mowing, to service all the equipment and produce competition rings on a showground ready for action.

Early ticket sales have been strong and we've managed to grow our member numbers from last year. Competition entries are still open and we're tremendously proud to see that we have retained the support of our livestock exhibitors for 2023 with what looks like a bumper crop of sheep again and with our dairy cattle section increasing in size once more. Looking through our beef cattle entries and we see some superb names entered – the judging of our CLM Beef Overall Champion is going to be an extremely hard task for this year's judge, Paul Westaway.

Traders found life particularly tough after Covid, and shows nationwide have all reported reduced numbers of shopping stands. Whilst the economic climate remains very challenging and with online selling the preferred route for many traders, we are very pleased to say that our show this year has well over 200 trade stands booked so we're bucking the trend and getting back to pre-covid levels. A huge number of the stands are new for this year, with plenty of local traders represented. We hope you'll make time to explore and shop with the stands at the show who all go to such effort to help make their pitches stand out.

The Members' Marquee will once again be the place to go for a relaxed but delicious lunch with friends. Please do support our caterers who will be offering hot and cold lunch options of two or three courses. There's also a coffee bar and selection of snacks available all through the day – did you know you can even have a delicious afternoon tea in our Members' Marquee?

Outside of the Members' area you'll find a refreshed selection of catering outlets too. More information will come with your passes in early August but we can't wait to try out the new Barley Bubbles Champagne and Oyster



bar and to enjoy an ice cream made from the milk of the Jersey cows at Park Farm, Brasted.

So the countdown continues, and from us here in the office we thank you for your continuing support for our show as a member, sponsor or volunteer. Packs containing your passes will be going out in early August. Please do get your guest badge orders in ASAP so we can get them out to you in your packs. Instructions for orders are on p4.

We look forward to seeing our showground come to life over the coming weeks and to greeting you all again in August!

Judy & Meghan
01342 832307





Meet the President!



The Joint Chairmen of the Edenbridge & Oxted Agricultural Show are very pleased and proud to announce that Jan Boomaars has agreed to take on the role of Show President. With seven generations of farmers in his family before him, our new Show President couldn't have a greater passion for agriculture and food production.

Of Dutch heritage, Jan moved to the UK in 1987 and farms some 1500 acres at Vexour in Chiddingstone. Alongside a busy arable operation Jan and his team are renowned breeders of Charolais, Hereford and Angus cattle and of Texel and Charollais sheep.

Much more than just a figurehead, the Show President has a very interesting and varied role to play. Over the two years of their tenure they attend the meetings of our organising committees and they advise and use their skills to help drive positive developments for the long term good of the show. Energy and ideas are certainly in abundant supply with Jan Boomaars. After a distinguished career as a partner with Goldman Sachs he became CEO and part owner of leading market maker Optiver in 2015.

At home he and his family have been a keen supporter of The Garden Classroom charity and host many of their summer activities at their farm. At Vexour Jan has invested heavily in technology and facilities to make his farm a model of efficient design and environmental performance. He opens the farm regularly to student groups and other farmers to share knowledge and ideas.

Despite still working and travelling extensively, through his presidency Jan is determined to help his favourite agricultural show find a more resilient future. Speaking of his new role he said "I've been attending and exhibiting cattle at Edenbridge & Oxted for many years now and it's an event that's very close to my heart. The quality of the show and its competitions rivals any 'Royal' or 'County' show and it's a superb example of what a traditional agricultural event really should be. Being the best example of its kind in the South East and being so close to London I'm keen to see how we can help attract more visitors who haven't connected with food and farming before."

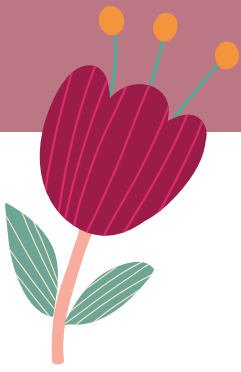


Bill Peters, Joint Chairman of the Show and Farm Manager of the Titsey Estate said "Jan is very well-known for his commitment to pedigree cattle and sheep breeding, and is very well-respected for his innovative approach to farming. We are honoured that he has accepted this role and proud to have created the type of show that attracts the support of people of this calibre. We look forward to working together with Jan over the next two years."



Keep up with our news and join the conversation on our social media feeds.
Search @EdenbridgeOxtedShow

Update for Supporters, July 2023

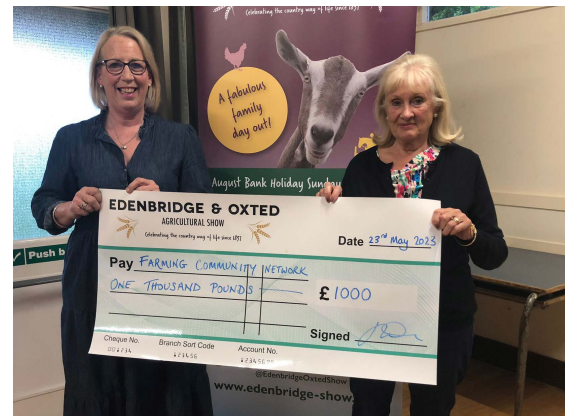
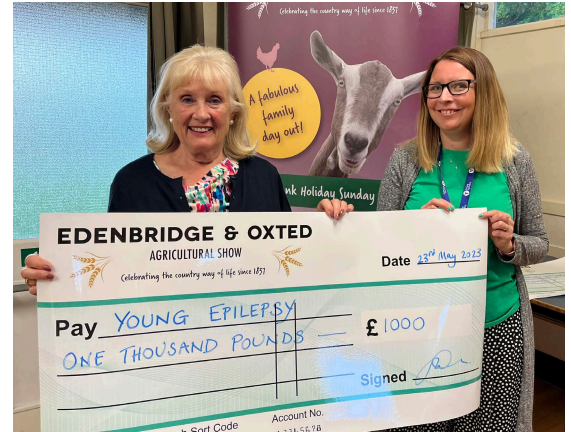


Whilst the Edenbridge & Oxted Show is a charity in its own right, our trustees make grant awards each year to charitable organisations working in the ways that support our own charitable aims.

At our society's AGM we welcomed representatives of two of those charities we supported this year – Sally Field from Farming Community Network and Hannah Welton from Young Epilepsy.

Our grants this year were awarded to:

- Kent, Surrey and Sussex Air Ambulance, who work every day to save lives and last year alone responded to over 3,000 incidents.
- Farming Community Network, a charity that supports farmers and families within the farming community, running a confidential, national helpline and e-helpline which is open every day of the year from 7am to 11pm.
- Perennial Gardeners Society, the UK's only charity dedicated to helping everyone who works in horticulture, and their families, when times get tough.
- Young Epilepsy, Lingfield, creating better lives for children and young people with epilepsy. Our grant is specifically to support horticulture projects.
- Farms for City Children, a charity that enables children from disadvantaged communities to experience the adventure of working together on farms in the heart of the British countryside.
- Addington Fund, a UK farming charity that falls under the 'Farming Help' umbrella, helping farming families in their time of need.
- Surrey Docks Farm, a working city farm and charity that enables the whole community to learn about farming, food production and the natural environment.
- Cobtree Young Farmers, meeting every Saturday, members are between the ages of ten and 18 years old and help out with the feeding and cleaning of the Kent Life animals, as well as taking trips to other farms to learn about new farming systems and advances in agriculture.



EDENBRIDGE & OXTED SHOW

AUGUST BANK HOLIDAY
SUNDAY & MONDAY
LINGFIELD

Sponsored by

White
& Sons
Est. 1817

Help spread the word!

Did you know that our roadside boards are the most effective form of advertising we have to help us reach new visitors to our show? We have great support from the team at White & Sons, who very kindly sponsor these boards, but we're looking for more coverage and to expand our area of concentration if we can. We're not allowed to place boards in locations without the landowner's permission though, so we thought we'd ask our members and sponsors if they might have suitable places where a board could go.

Could you help? Do you have a spot along a busy road and would you happily display a board for us?

Please let us know on 01342 832307 or info@edenbridge-show.co.uk. If you have a What Three Words location or Google Maps pin for the proposed spot then that would be very helpful.

Update for Supporters, July 2023



Main Ring, Sunday 27th August

National Open 1.30m Showjumping	9.00am
Side Saddle Costume Concours d'Elegance sponsored by The Barley Mow	10.10am
Area Trial 1.50m Showjumping sponsored by Jackson-Stops	11.20am
Children's Mounted Fancy Dress sponsored by Toyland	12.30pm
Big Pete & The Grim Reaper - Monster Trucks Show sponsored by Kent Demolition & Ling Metals	12.50pm
Vintage Farm Machinery sponsored by Yeowart Agricultural	1.35pm
Osborne Refrigerators Double Harness Scurry Championship sponsored by Osborne Refrigerators	2.30pm
Coaching & Four in Hand sponsored by Longley Associates	3.20pm
Cavalcade of Footpacks	4.00pm
Big Pete & The Grim Reaper - Monster Trucks Show sponsored by Kent Demolition & Ling Metals	4.30pm
Harness Horse & Pony Championship sponsored by Kent Demolition	5.15pm
Parade of Heavy Horses sponsored by Mr & Mrs A Murison	5.30pm

Main Ring, Monday 28th August

Lightweight Show Hunter of the Year (HOYS) sponsored by The Old Surrey, Burstow & West Kent Hunt	7.45am
Middleweight Show Hunter of the Year (HOYS) sponsored by The Old Surrey, Burstow & West Kent Hunt	to follow
Heavyweight Show Hunter of the Year (HOYS) sponsored by The Old Surrey, Burstow & West Kent Hunt	to follow
Show Hunter of the Year Championship sponsored by The Country Way	to follow
Ladies' Side Saddle Show Horse of the Year (HOYS) sponsored by Ashdown Feeds	to follow
Cavalcade of Fox Hounds	11.00am
Vintage Farm Machinery sponsored by Yeowart Agricultural	11.30am
Big Pete & The Grim Reaper - Monster Trucks Show sponsored by Kent Demolition & Ling Metals	12.15pm
BSPS Open Ridden Mountain & Moorland Championship sponsored by Sparrowhawk's Equine Cremations	1.00pm
Grand Parade of Livestock, sponsored by Alex Jones Funeral Directors	1.15pm
Harwoods Accumulator Showjumping sponsored by Harwoods Land Rover	2.45pm
Big Pete & The Grim Reaper - Monster Trucks Show sponsored by Kent Demolition & Ling Metals	3.55pm
Supreme Ridden Horse Championship sponsored by QuitKick	4.40pm
Presentation of Winston Churchill Memorial Trophy	to follow
Foxhunter 1.20m Open Showjumping sponsored by Croydon Fireplaces	5.30pm

Guest Badges

Guest badges are £21 per day for adults and £8 per day for Juniors (5-15).

The easiest way to purchase your guest badge is to buy online here:

www.edenbridge-show.co.uk/products/23

All members have an account on our website. Please log in with your email address and click 'forgotten password' to access your account. Guest tickets purchased before the end of July will be posted in with your pack. Alternatively, use the attached/enclosed form to order your guest badges.



THE OLD DAIRY, WINTERSELL FARM, DWELLY LANE, EDENBRIDGE, KENT TN8 6QD
T: 01342 832307 E: info@edenbridge-show.co.uk W: www.edenbridge-show.co.uk