

# EDENBRIDGE & OXTED

## AGRICULTURAL SHOW

Celebrating the country way of life since 1837

### Update for Supporters, March 2023



**There are landmarks in the spring calendar that are eagerly awaited each year.**

Our farming friends become midwives for calving and lambing, and the clocks going forward brings the relief of longer daylight. For us in the Show Office this is one of our busiest times of year too. Fuelled by Easter chocolate we tackle the renewal of membership, the booking of trade stands, the admin for sponsors, the jigsaw puzzle of ring timetables, the booking of judges, the creation of competition schedules, the negotiation of contracts, the close of last year's accounts, the planning of advertising and the ordering of everything from rosettes to crowd barrier!

It's fair to say that things are definitely warming up, and this year is definitely going to be a show to remember. From spectacular Main Ring entertainment to new competitions and a few changes to the layout once again, we're doing everything we can to keep things fresh and exciting in 2023.

For our members, renewal becomes due on 1st April. Keen to keep our show an affordable event for all, our trustees voted to hold the membership rates for 2023 at the same level as 2022. With rising costs this was not an easy decision but we hope to grow our membership again so please do encourage friends and family to look at taking out a subscription for this year. It really is the best value way to enjoy the show with the added bonus of the best views of all the Main Ring action from the Members' Marquee.

As ever, please don't hesitate to call or email us if you want to chat about your membership, sponsorship or about any aspect of the show this year. We'll do our best to help.

Judy & Meghan  
01342 832307



### Manic Monsters!

**We've pulled out all the stops this year and we're bringing monster mayhem to the showground with two of Britain's biggest and best monster trucks, Big Pete & The Grim Reaper!**

**They'll be roaring around the Main Ring with a display that promises to thrill young and old alike! Watch the 16ft tall Big Pete make mincemeat of cars beneath and fly through the air on his path of destruction.**



# Update for Supporters, March 2023



Above: Valais Blacknose breed Below: 2022 Champion Sheep



In 2022 we saw our largest ever number of pedigree and commercial sheep entered for the show, with over 1000 of the woolly jumpers attending!

We're pleased to say that we had sufficient support from exhibitors of the Valais Blacknose and the Texel breeds of sheep to be able to open two new competition sections this year, dedicated to these popular breeds. We're very grateful to Valais Blacknose Sheep Kent and Mole Valley Farmers who have joined us as sponsors of these new sections.

The new Wool Marquee was a big success in 2022, so the fleece competition is definitely back again for this year, kindly sponsored by Manteaux Clothing. If you're shearing your sheep now so they're in perfect coat condition for August then don't forget to save your best fleeces for our competition!



## Lovebirds at the Showground

Whilst having a wander around the showground this week we came across these two beautiful swans enjoying the surroundings of our fly fishing demonstration pond!

This is a super sight as our Country Sports Committee volunteers and our farm tenant all take great pride and care in maintaining the land in a way that works to protect nature and provide a healthy environment for wildlife.

Margo and Jerry look to have made themselves very much at home here, with Jerry doing his best to see us off his patch! We noted geese, ducks and a heron on the same visit so we're definitely doing something right for our feathered friends.





# Update for Supporters, March 2023

## Membership Renewal

Rates are held for 2023:

**Single Membership      £45**

One pass to admit one person both days

**Joint Membership      £85**

Two passes to admit two people both days

**Governor      £175**

Four passes to admit four people both days & one Governor Parking Pass if purchased before 31st May



Photo by Louise Siggers

- If you pay by Direct Debit you should have already received an email from us notifying you of your forthcoming renewal. To set up a new Direct Debit so your membership can automatically renew each year, please telephone the office for details.
- If you pay by standing order your bank will send your payment as per your standing instructions, usually early in April. We will contact you to confirm receipt of your payment.
- If you pay each year online then please log into your account on our website to renew your membership.

We can still accept cheques for your membership if you prefer.

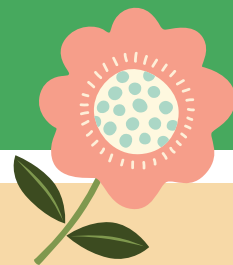
Please make cheques payable to 'Edenbridge & Oxted Agricultural Show' and post along with confirmation of your name, address, phone number and email address to Edenbridge & Oxted Agricultural Show Office, The Old Dairy, Wintersell Farm, Dwelly Lane, Edenbridge, Kent TN8 6QD.

**Please, remember to let us know if you have moved house, changed email address or phone number.**



The Dorset Axemen will be appearing in a dedicated new ring at the Edenbridge & Oxted Show this year, bringing their display of traditional forestry skills, performed with breath-taking speed and accuracy. They'll be using razor sharp axes and saws individually and in teams, chopping against the clock three times each day. Definitely a display not to be missed!

# Update for Supporters, March 2023



## Could you or your business become a sponsor?

We've got some really exciting ideas for how businesses and brands can connect with our huge local audience.

Sponsorship income helps to subsidise the Show as a charity, covering prize money and contributing to essential costs. There are still a number of competition classes that haven't got sponsors at present, and there are new opportunities too.

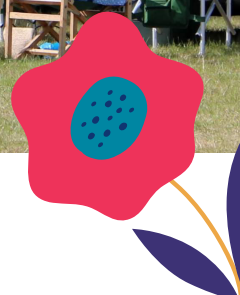
Sponsor our popular Dog Agility ring for just £850 or our new Horse of the Year Show Ridden Coloured qualifiers for £285. Our Supreme Ridden Horse Championship is still looking for a sponsor, as are our public tickets this year if you have a brand you want to get in front of all our visitors!

Beginning from just £100 we have some really fun options to help you, your colleagues and customers enjoy the show from a different angle.

See [www.edenbridge-show.co.uk/sponsors](http://www.edenbridge-show.co.uk/sponsors) for more information.

## Sponsor Benefits 2023

Value of Sponsorship	Sponsor Badges (admit 1 person both days)	Governor Parking Passes	Member Lunch Vouchers	Main Ring Ad Banner	Catalogue Advert	Drinks Reception Invitation
£150 - £250	2	1				✓
£251 - £450	4	2				✓
£451 - £750	6	3				✓
£751 - £1000	6	3	6	✓	Half page	✓
£1001 - £1500	8	4	8	✓	Half page	✓
£1501 +	10	4	10	✓	Full page	✓



THE OLD DAIRY, WINTERSELL FARM, DWELLY LANE, EDENBRIDGE, KENT TN8 6QD  
T: 01342 832307 E: [info@edenbridge-show.co.uk](mailto:info@edenbridge-show.co.uk) W: [www.edenbridge-show.co.uk](http://www.edenbridge-show.co.uk)